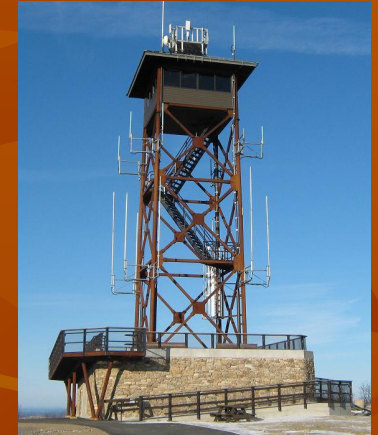


# Massachusetts DCR Bureau of Forest Fire Control



**2024 Fire Season –  
Not So Normal!**



## DCR

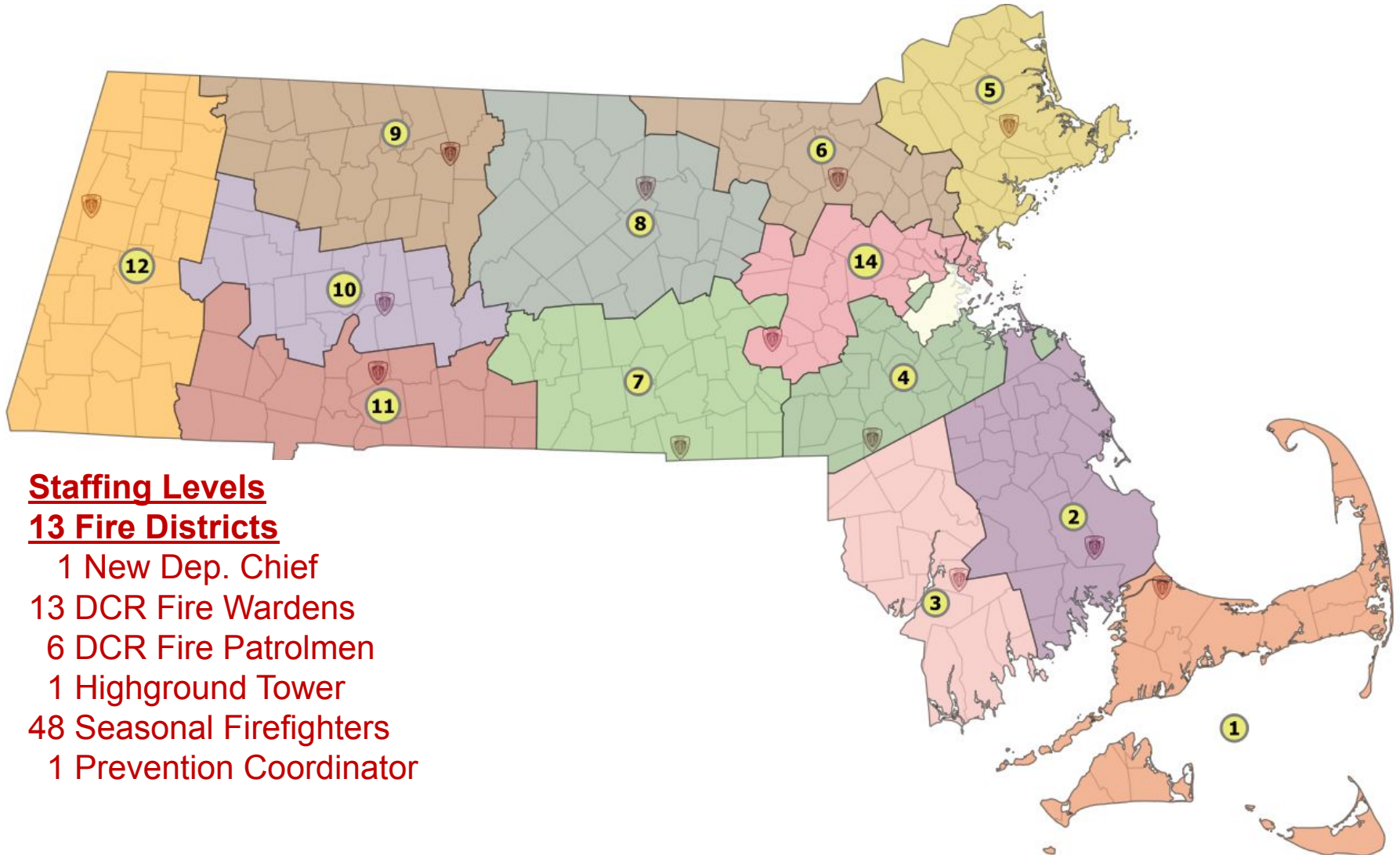
### Bureau of Forest Fire Control and Forestry

#### Forest Fire Control Responsibilities

*Providing aid and assistance in the prevention, detection and suppression of forest fires to cities and towns since 1911.*

***\*\*Local Fire Chief has jurisdiction over all fires, including STATE Lands.\*\****

# DCR Bureau of Forest Fire Control Fire District Locations



## Staffing Levels

### 13 Fire Districts

- 1 New Dep. Chief
- 13 DCR Fire Wardens
- 6 DCR Fire Patrolmen
- 1 Highground Tower
- 48 Seasonal Firefighters
- 1 Prevention Coordinator

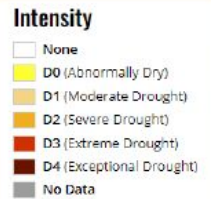


# Influences on the 2024 Massachusetts Fall Fire Season

- **Drought**
- High Keetch-Byram Drought Indices
- Periods of Above Average Temperatures
- Consistent days of low Relative Humidity
- **Multi-Day Wind Events**
- **Consistent Low Dew Points**
- Low Fuel moistures
  - In ALL Fuel Categories
- **Seasonal Leaf Drop**

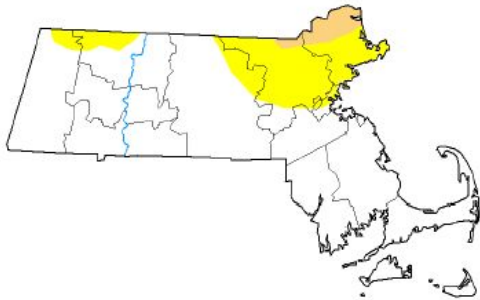


# Current Drought Comparison



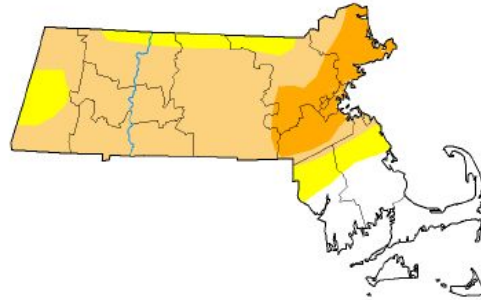
**3 months ago**

August 6, 2024



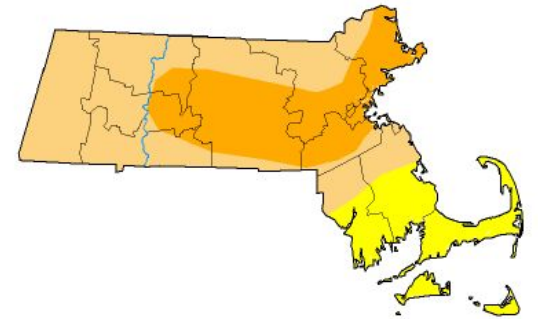
**1 week ago**

October 29, 2024



**Current**

November 5, 2024

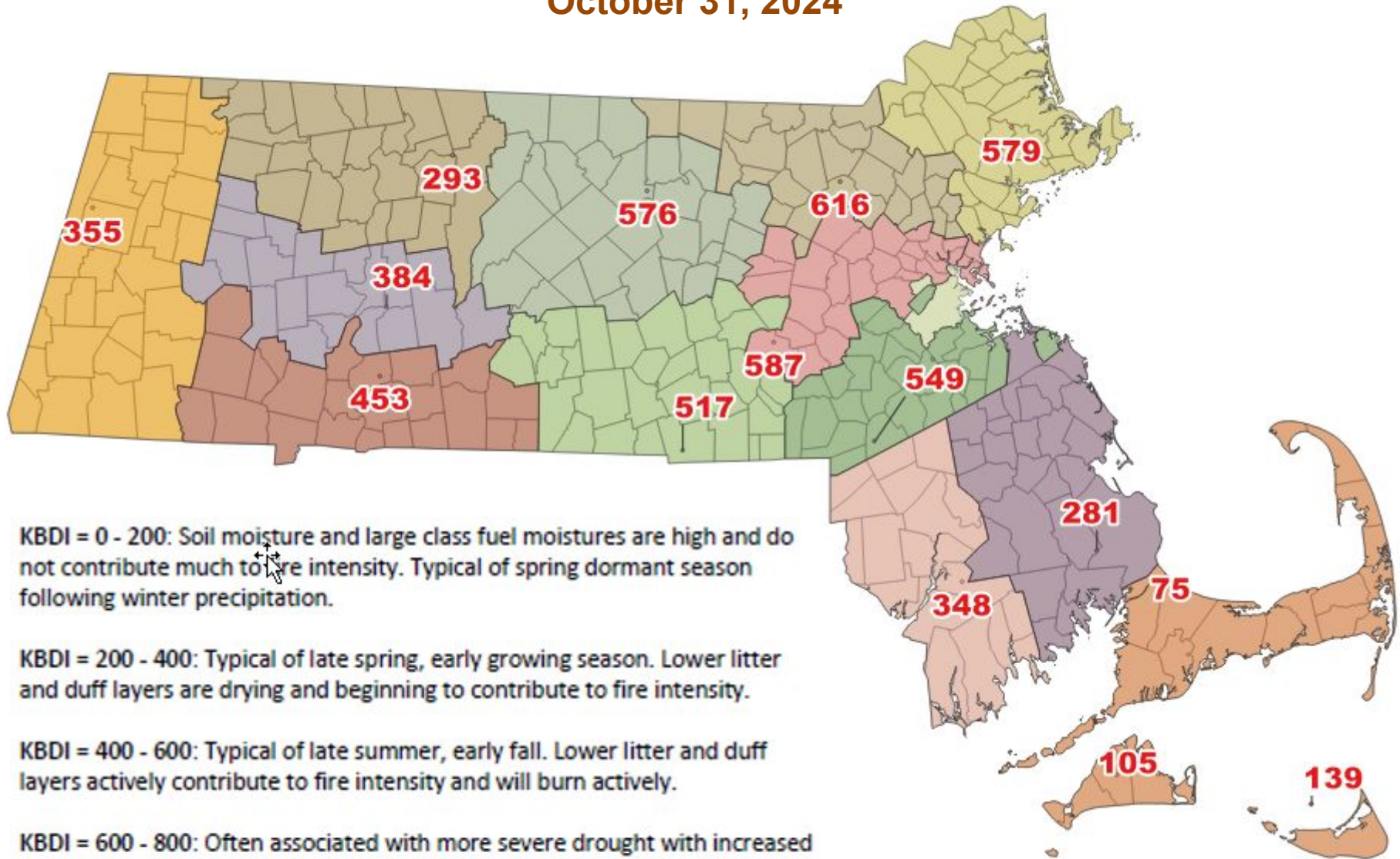


Drought conditions have worsened over the past three months. Abnormally Dry (D0), Moderate (D1), and now Severe (D2) Drought Intensity have developed throughout the majority of Massachusetts. Most if not all wildfires within the state are being influenced by Moderate to Severe Drought and critically dry dead fuels. Elevated fire danger and dry fuel conditions will likely contribute to continued fire growth on any existing or new emerging incidents until substantial weather changes are experienced (i.e. increased Relative Humidity, Precipitation, and Cooler Temperatures).



# KEETCH-BYRAM DROUGHT INDEX

## October 31, 2024



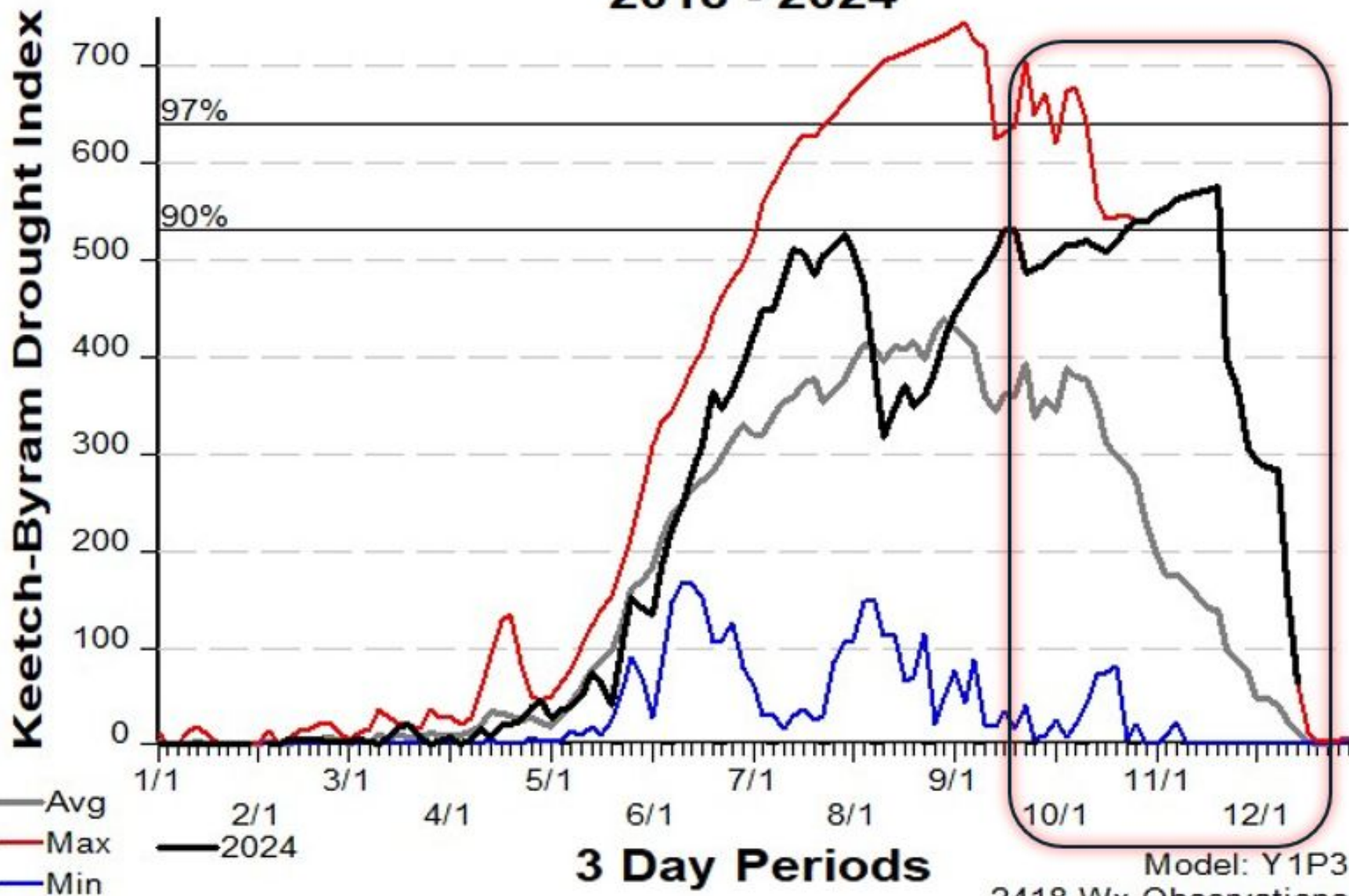
KBDI = 0 - 200: Soil moisture and large class fuel moistures are high and do not contribute much to fire intensity. Typical of spring dormant season following winter precipitation.

KBDI = 200 - 400: Typical of late spring, early growing season. Lower litter and duff layers are drying and beginning to contribute to fire intensity.

KBDI = 400 - 600: Typical of late summer, early fall. Lower litter and duff layers actively contribute to fire intensity and will burn actively.

KBDI = 600 - 800: Often associated with more severe drought with increased wildfire occurrence. Intense, deep burning fires with significant downwind spotting can be expected. Live fuels can also be expected to burn actively at these levels.

# 192701-OXBOW 2018 - 2024



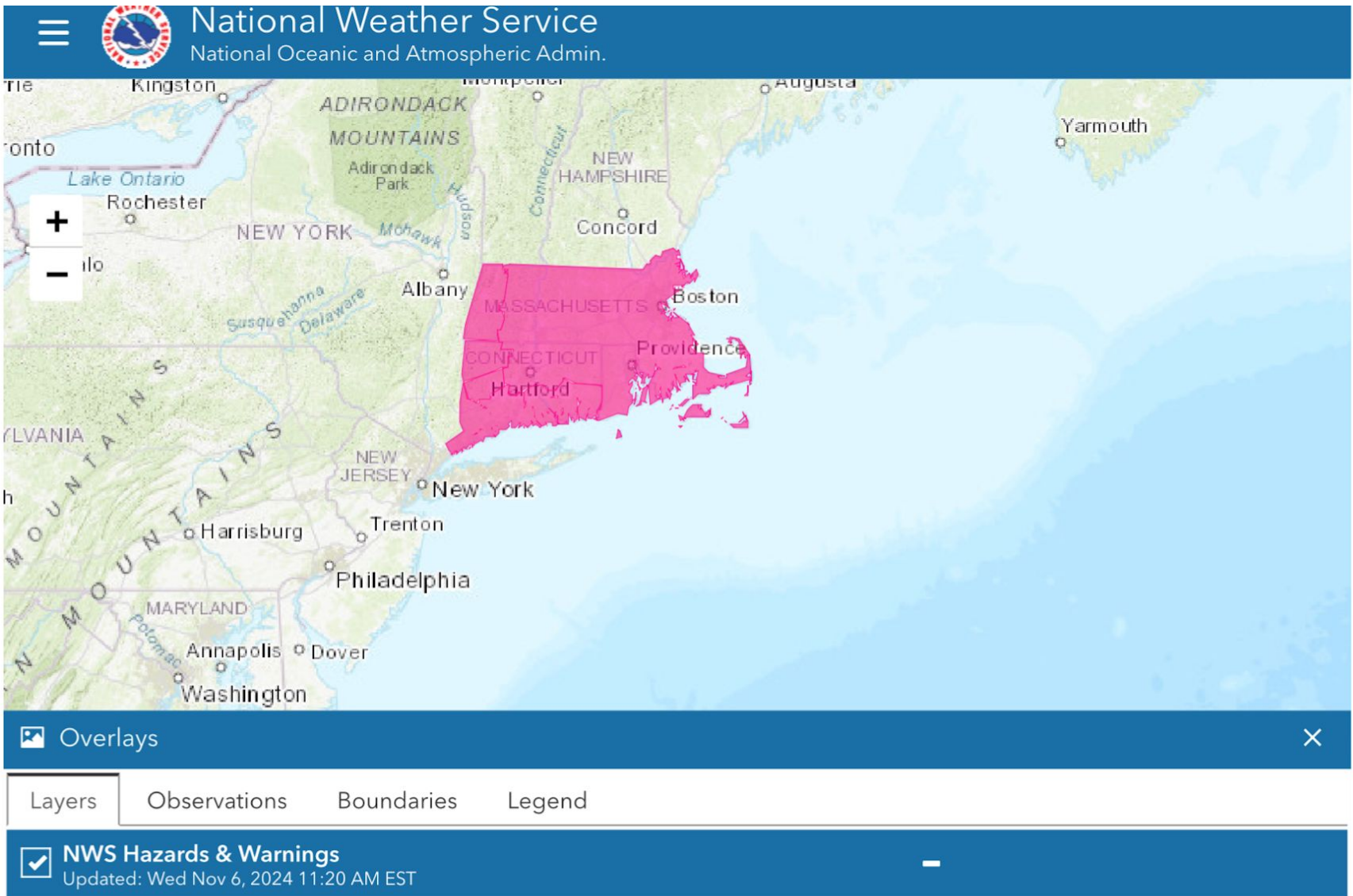
3 Day Periods

Model: Y1P3

2418 Wx Observations

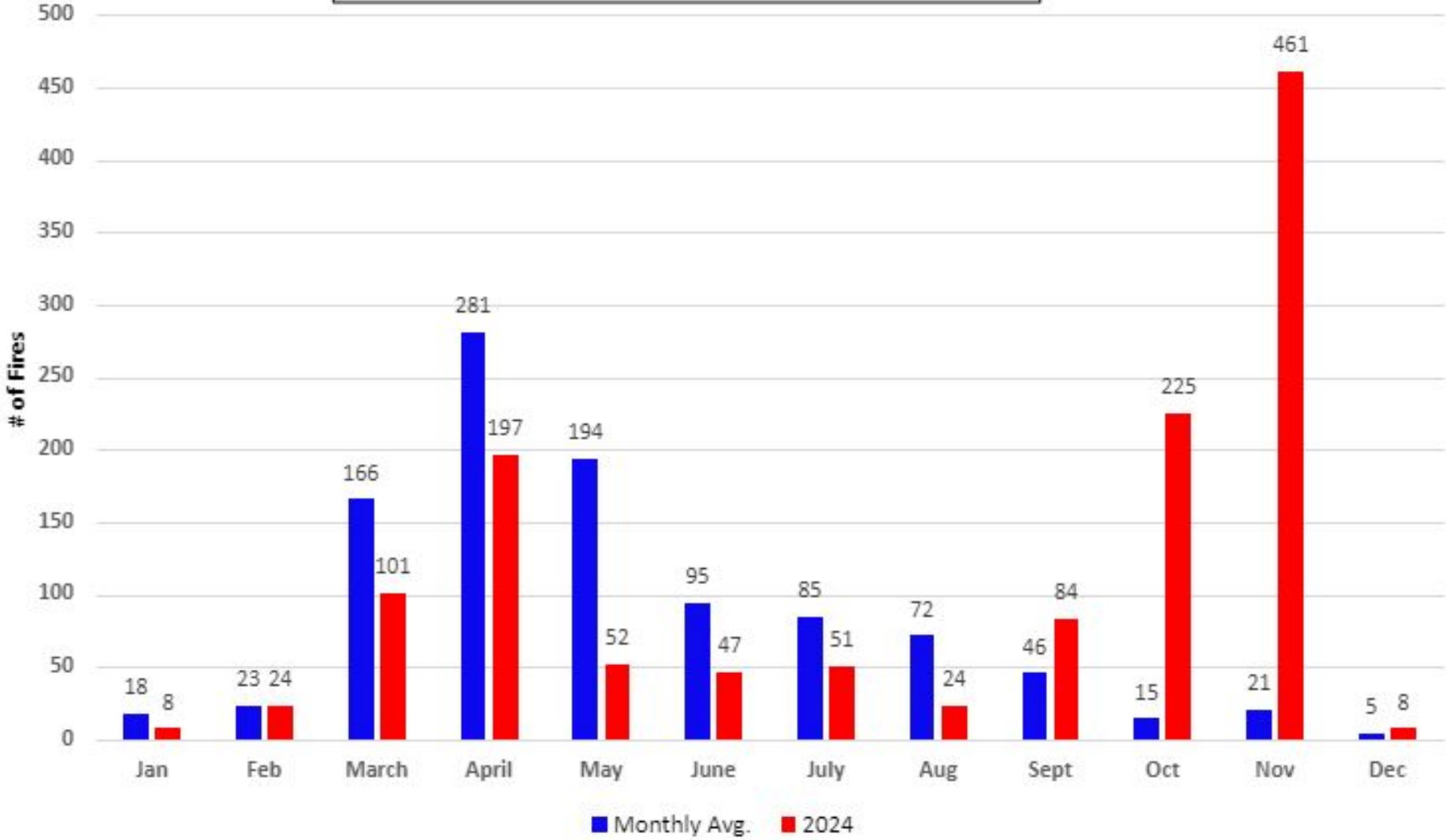
FF+5.0 build 20240306 12/16/2024-12:08

# 9 RED FLAG WARNING DAYS in 2024 for Massachusetts

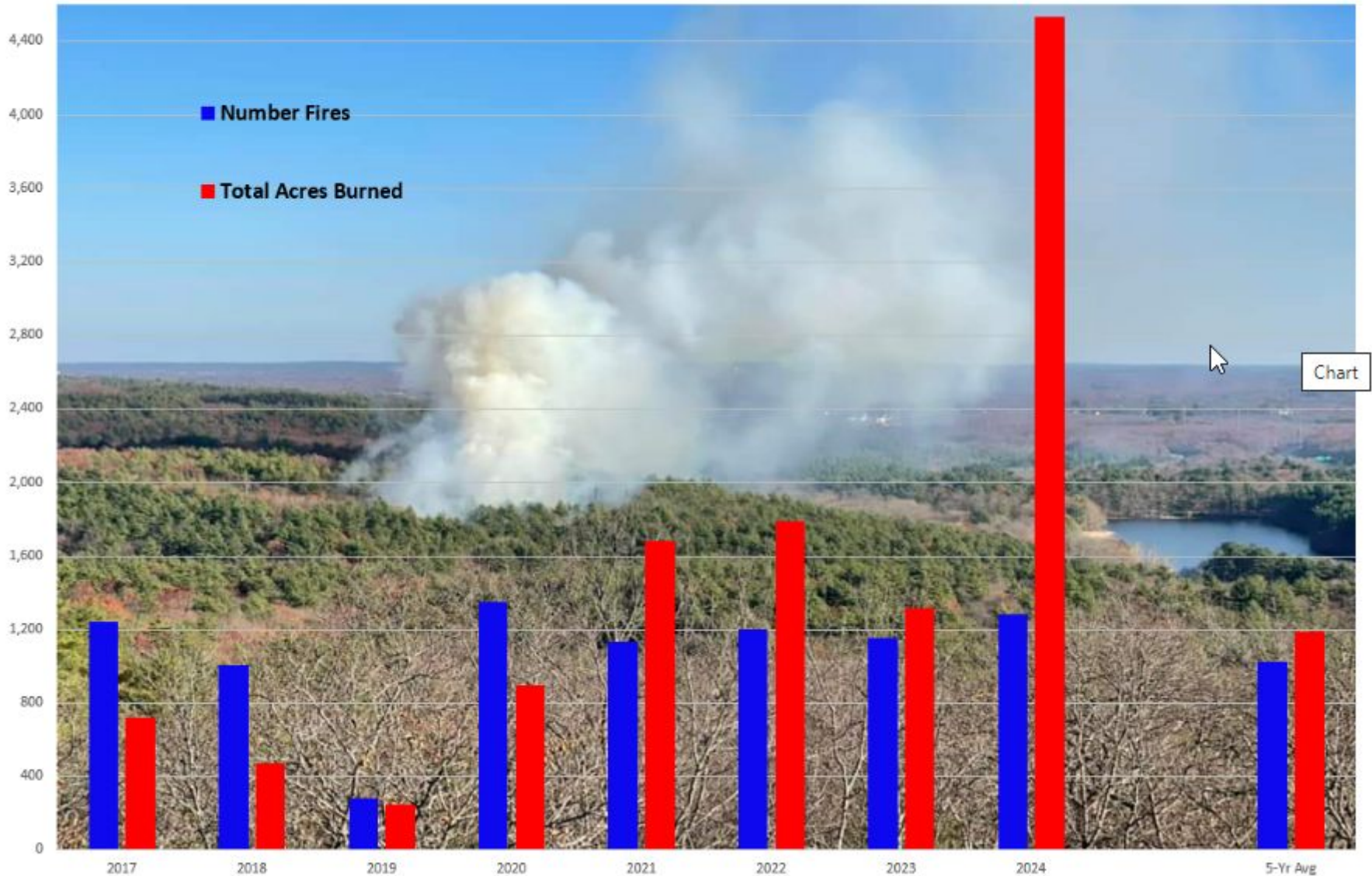




# Massachusetts Wildfire Occurrence 2018- Current by Month



## Massachusetts Wildland Fire Occurrence 2017-2024



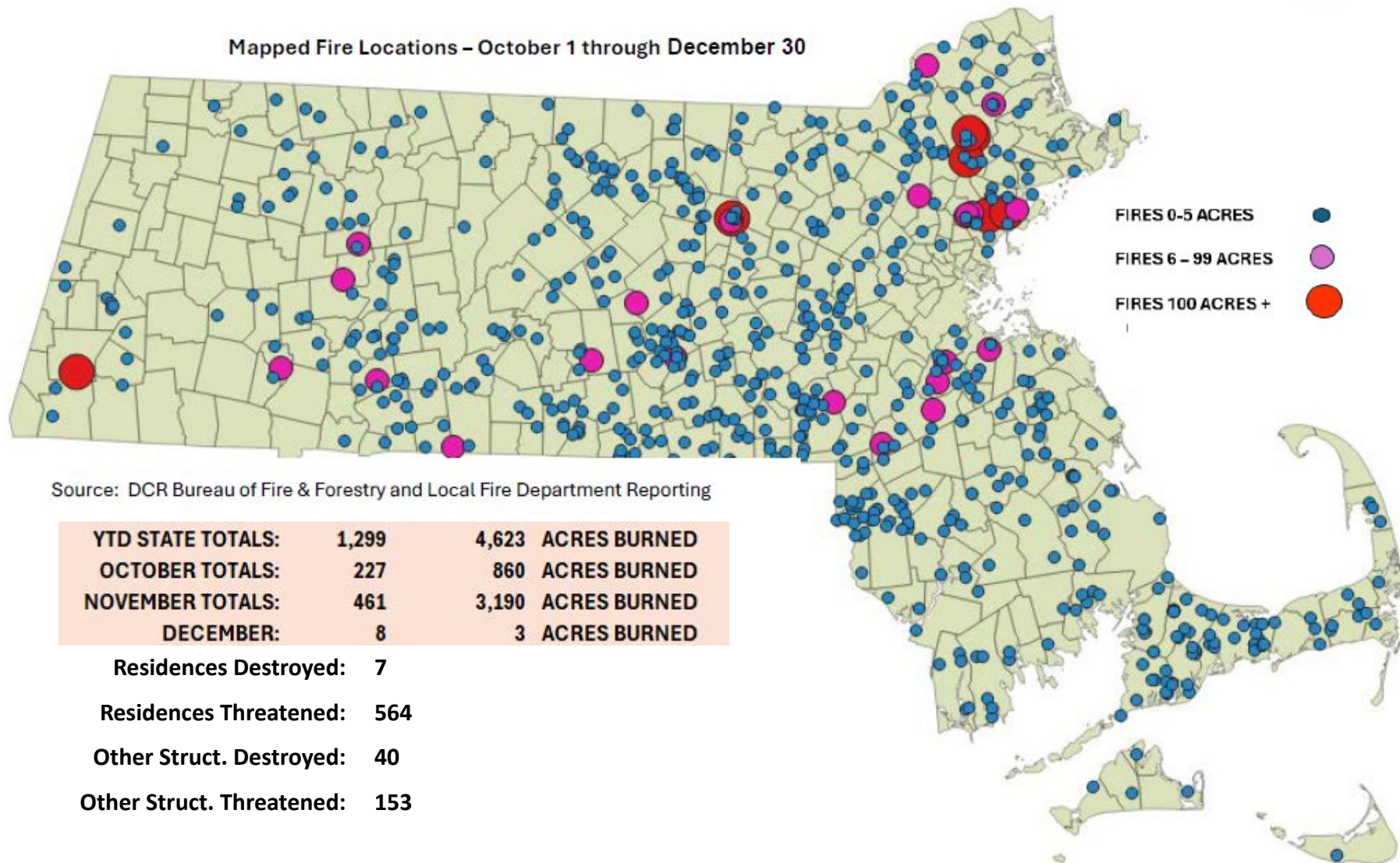


# MASSACHUSETTS WILDFIRE OCCURRENCE

## October 1st to December 30, 2024



Mapped Fire Locations – October 1 through December 30



Source: DCR Bureau of Fire & Forestry and Local Fire Department Reporting

<b>YTD STATE TOTALS:</b>	<b>1,299</b>	<b>4,623</b>	<b>ACRES BURNED</b>
<b>OCTOBER TOTALS:</b>	<b>227</b>	<b>860</b>	<b>ACRES BURNED</b>
<b>NOVEMBER TOTALS:</b>	<b>461</b>	<b>3,190</b>	<b>ACRES BURNED</b>
<b>DECEMBER:</b>	<b>8</b>	<b>3</b>	<b>ACRES BURNED</b>

**Residences Destroyed: 7**

**Residences Threatened: 564**

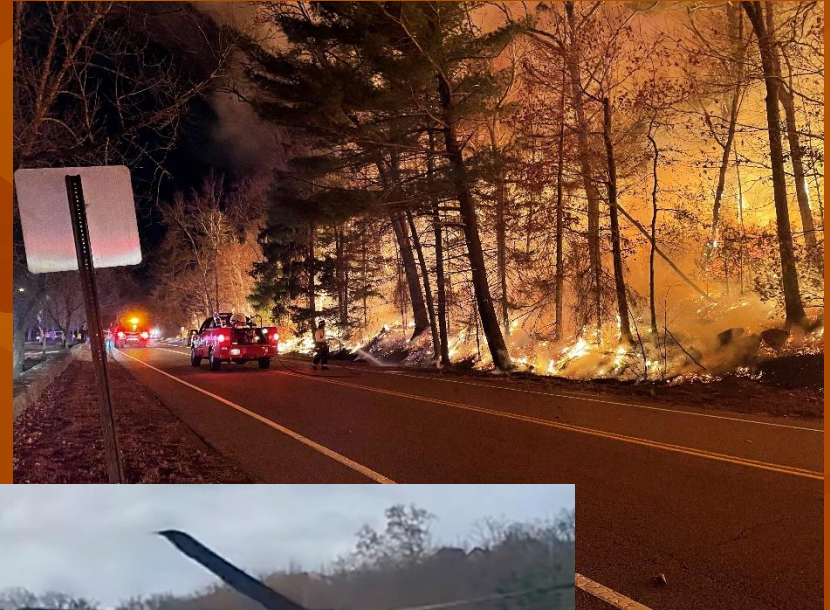
**Other Struct. Destroyed: 40**

**Other Struct. Threatened: 153**



# Fire Activity Demanded Specialized Tactics and Strategies

- Indirect Suppression Tactics
- Burnout Operations
- Strategic Planning
- Higher Level Strategic Risk Planning
- Aviation











## ***State Agencies***

- Governor's Office
- Secretary, Energy and Environmental Affairs
- Secretary, Public Safety
- Department of Conservation & Recreation
  - Bureau of Fire and Forestry
  - State Parks Operations
  - Park Ranger Bureau
  - External Affairs
- Massachusetts Dept. of Fire Services
  - State Fire Marshal
  - Operations
  - State Fire Mobilization System
- Massachusetts Emergency Management
  - Director
  - Operations
  - Statewide Dispatching and Warning system support
  - State Fire Mobilization System
- Massachusetts State Police
  - Air Wing
  - UAS Operations
- Massachusetts Air National Guard
  - Aviation (Blackhawk Helicopters)
- Maine Forest Service
- New Hampshire Forest Protection Bureau
- Connecticut Dept. of Energy and Environmental Protection
- Rhode Island DEM, Division of Forest Environment

## ***Federal and Interagency Partners***

- U.S.D.A. Forest Service
  - Eastern Area Coordination Center
  - Region 9 Fire and Aviation
  - Northeast States Cooperative Fire Specialist
  - Northeast Area Coordination Center (White Mt. National Forest)
- National Park Service
- National Interagency Fire Center (Boise, ID)
- National Incident Coordination Center
- Northeast Forest Fire Protection Compact
- National Weather Service (Boston, Albany)

## ***Local Agencies***

- All Responding Local Fire Departments
- All Responding Local Fire Departments providing Mutual Aid
- Municipal Town Governments
- State Fire Mobilization System at the Regional and Local level

**THANK YOU**

Dave Celino

Chief Forest Fire Warden

[David.Celino@mass.gov](mailto:David.Celino@mass.gov)

(508) 326-2403