



Amanda Lewis
MassTrails Director

Eli Velluti-Fry
MassTrails Grant Program Manager

Cindy Nelson
MassTrails Planner



MassTrails Overview

WHY:

One Trails Team, One Vision, and One Action Plan

Improve agency coordination, communication, policies, and programs to support a common vision for trails.

Provide technical guidance and expertise, including trails publications, trainings, and resources.

Provide public funding to support the buildout of trail networks across the Commonwealth.



MassTrails Grant Program

WHAT:

Funding to plan, design, construct, and maintain shared-use pathway and recreational trail projects across the Commonwealth

Applications are accepted annually with a deadline of February 1 (February 3 this year!)

Eligible recipients are municipalities, Native nations, public entities, and non-profit organizations.

Depending on project scope, 1 or 2 years to complete.

Over \$10 million in funds available typically awarded to 60 - 80 projects.



MassTrails Grant Program

HOW:

Provide reimbursement-based, matching grants through one online grant application

Award amounts depend on project type and need.

Maximums: \$100K for recreational trails projects and \$500K for shared-use paths that will have significant regional or statewide impact.

Grantee must first pay for expenses and then submit for reimbursement using required documentation.

Minimum of 20% match required (of total project value).



MassTrails Grant Program

WHO:

MassTrails Grants are funded through two different sources:

Recreational Trails Program (RTP)

Federally funded through the US Department of Transportation's Federal Highway Administration and administered at the state level. Provides funding for the construction and maintenance of recreational trail projects. Both motorized and non-motorized trail projects qualify for assistance.

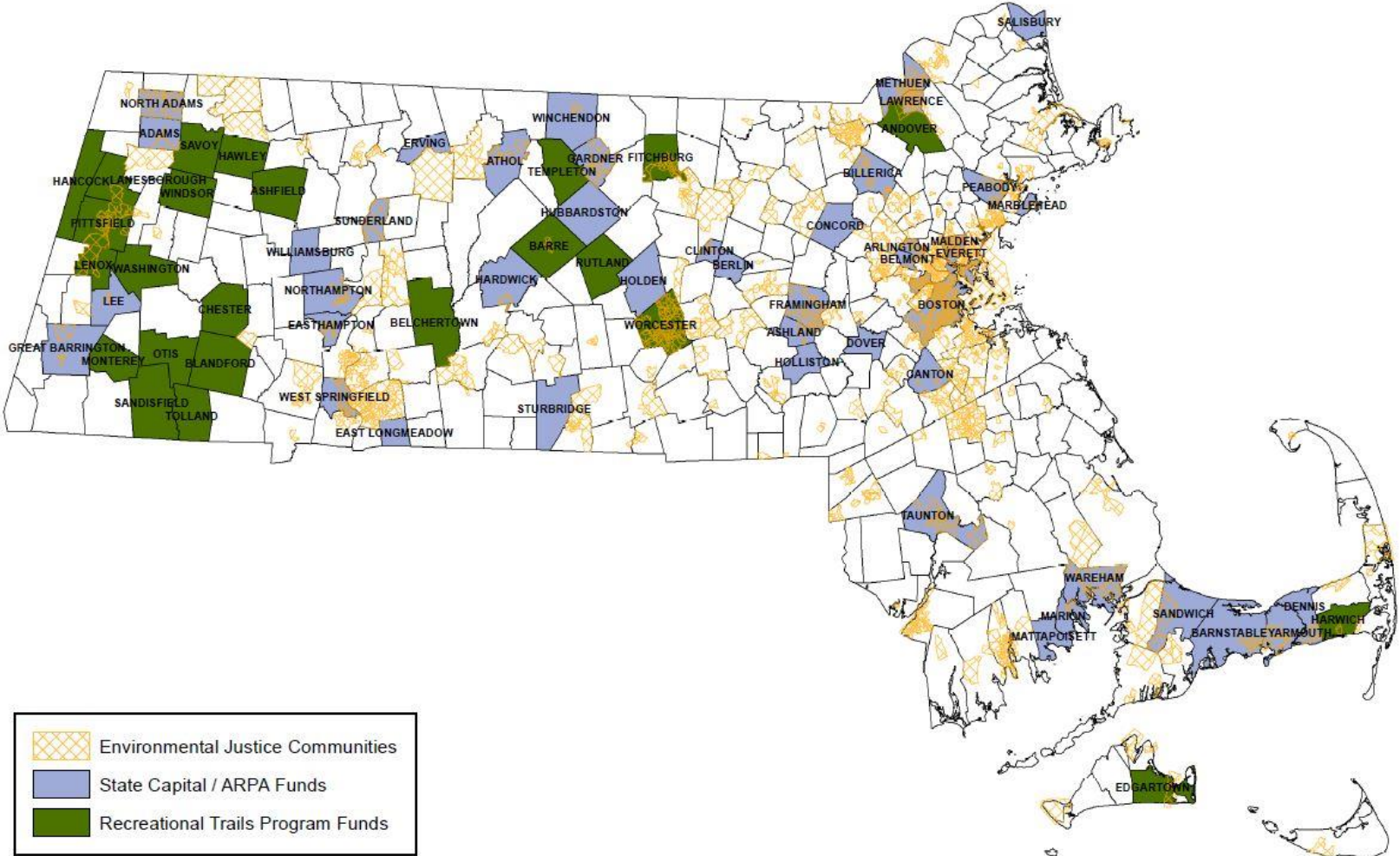
Commonwealth Trails Grants

Supported by the state's annual Capital Investment Plan and authorized through the Environmental Bond Bill. Aims to help communities plan, design, construct, and maintain off-road shared-use pathway connections between where Massachusetts residents live, learn, work, shop, and recreate, especially by building out the longer distance regional networks of shared use pathways across the state and filling in critical gaps in existing networks, or overcoming current barriers to connectivity.

Grants are reviewed and recommended by the Inter-Agency Trails Team and the Massachusetts Recreational Trails Advisory Board (MARTAB).

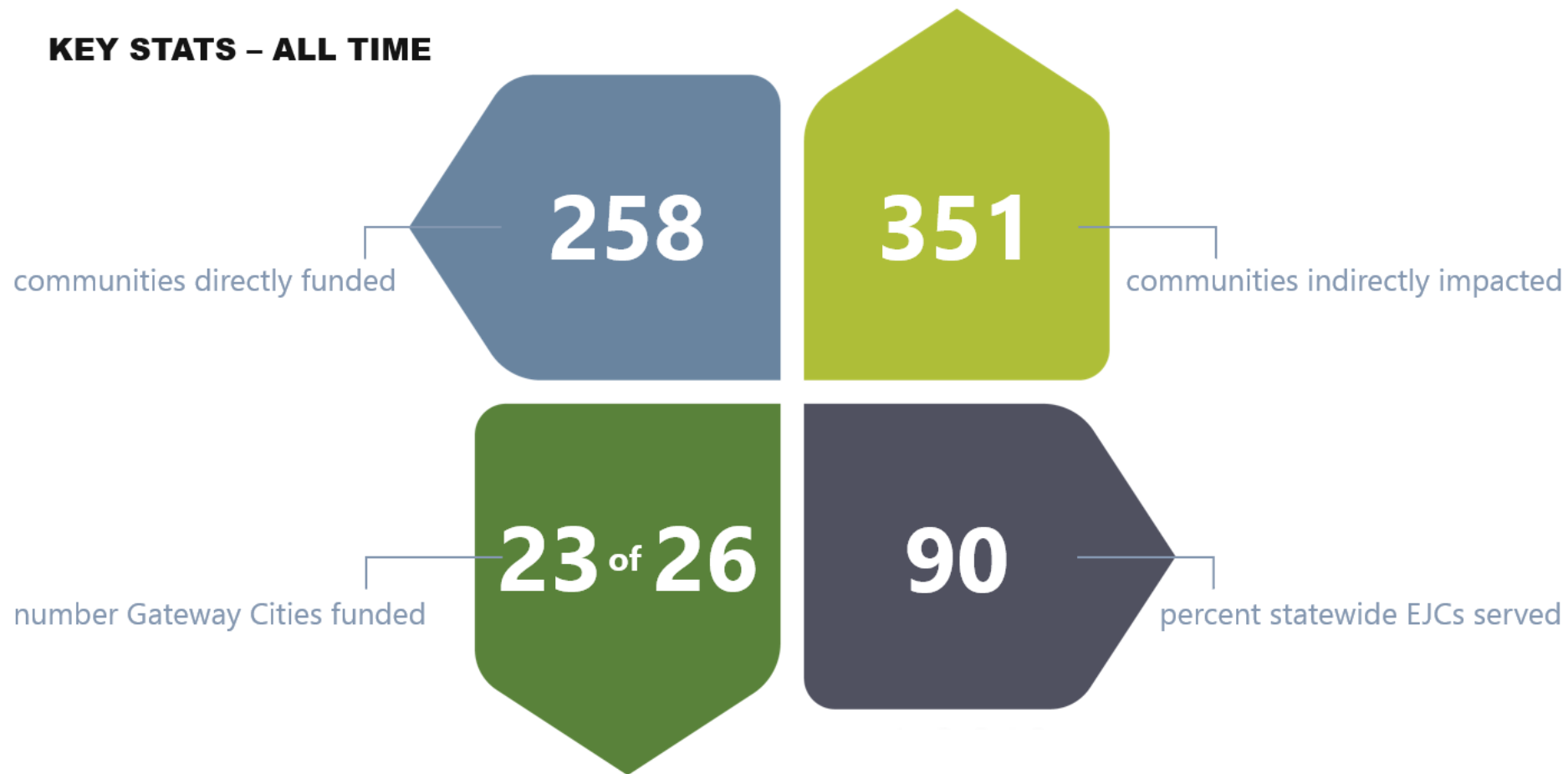


MassTrails Grant Program – 2024 Awards





KEY STATS - ALL TIME





MassTrails Grant Program

Grant Criteria. MassTrails seeks projects that:

- Plan, design, or construct off-road, shared-use pathway and recreational trail connections between where Massachusetts residents live, learn, work, shop, and recreate (CONNECT)
- Serve the diversity of Massachusetts residents (EQUITABLE)
- Effectively address accessibility guidelines (ACCESSIBLE)
- Allow for efficient use of grant funds (EFFICIENT)
- Are ready for the proposed phase (READY)
- Effectively incorporate or address safety (SAFE)
- Create diverse, high-quality recreational experiences and connect users of all abilities to the natural and cultural wealth of Massachusetts (EXPERIENTIAL)





MassTrails Grant Program

Eligible Grant Projects – by trail type

Shared-Use Paths

Defined as off-road infrastructure that is physically separated from motorized vehicle traffic and designed for use by bicyclists and pedestrians; paths provide flexible transportation options and recreation opportunities

- Greenways
- Rail Trails

Examples: Charles River Pathway, Mass Central Rail Trail, Mystic River Greenway

Hiker/Pedestrian Trails (“Woodland Trails”)

Trails which are designed, constructed, and maintained for hiker/pedestrian use (designed use).

- Long-Distance Natural Surface Trails
- Community/State/Federal Natural Surface Trails
- Historic/Cultural/Ecological Interpretive Trails

Examples: Appalachian Trail, Stone Farm Trail System in Brockton, Riverwalk in Great Barrington

Off-Road Motorized Trails

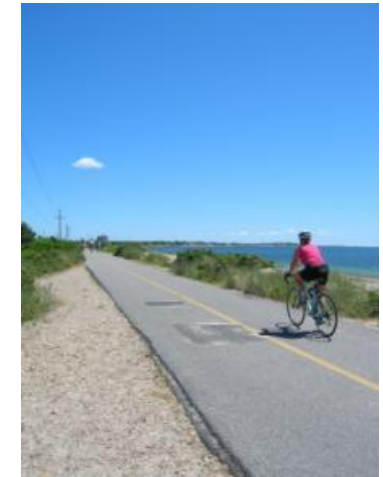
Trails designed to accommodate ATVs, off-road motorcycles, and snowmobiles

- ATV, Off-Road Motorcycle, 4-Wheel Drive Truck, and Snowmobile Trails

Examples: Snowmobile Association of Massachusetts Trail Network, October Mountain State Forest

Other

- Water Trails, Mountain Biking Trails, Cross-Country Ski Trails, Equestrian Trails, etc.





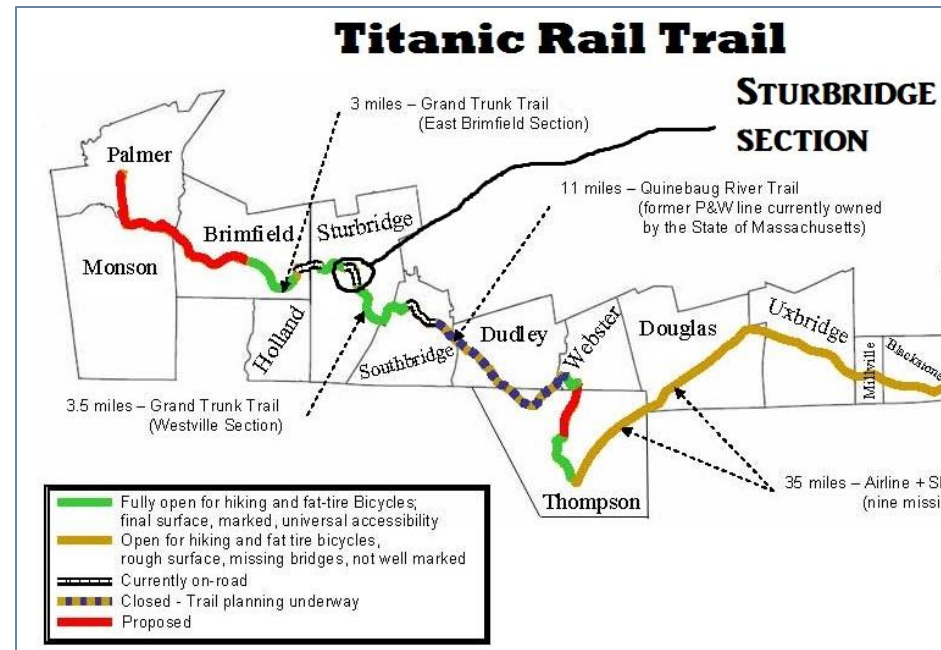
MassTrails Grant Program

Eligible Grant Projects – by activity

Project Development / Feasibility Studies / Conceptualization



City of New Bedford
New Bedford Working Waterfront Connector



Town of Sturbridge
Grand Trunk Trail - Central Section



MassTrails Grant Program

Eligible Grant Projects – by activity

Design / Engineering / Permitting



Groundwork Lawrence
Merrimack Riverwalk Path



MassTrails Grant Program

Eligible Grant Projects – by activity

Construction of new trails





MassTrails Grant Program

Eligible Grant Projects – by activity

Maintenance and restoration of existing trails

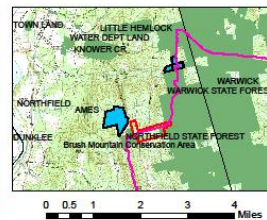
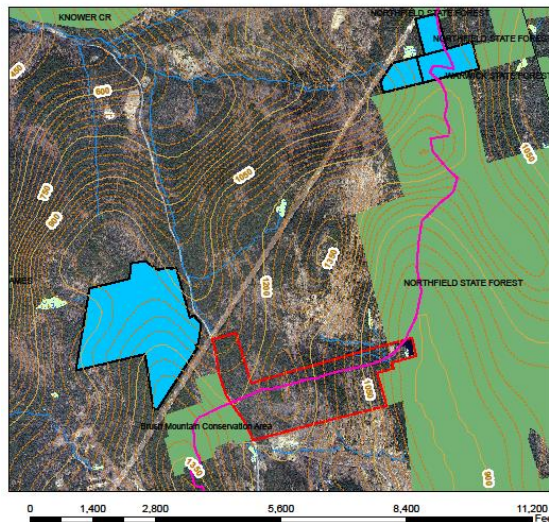




MassTrails Grant Program

Eligible Grant Projects – by activity


Acquisition of easements and fee interest in property for trails and trail corridors



Legend

- NMH MM-Trail Parcel (NENST)
- MM-Trail (NE National Scenic Trail)
- Other Forest Legacy Projects
- Statewide_Protected_Land
- Political Boundries
- Hydrologic Connection
- Wooded marsh

THIS MAP IS NOT A SURVEY
 This map is not a survey or subdivision plat, and should not be used or construed for such purposes. It was prepared without the benefit of field measurements or extensive title research. It is intended solely to assist the owner(s) of the land and Mount Grace in the administration and interpretation of the conservation restriction, by clearly depicting the presumed boundaries of the property, calculating the approximate acreage, and showing the approximate locations of any excluded lands, farmstead or homestead complex or special treatment areas.


 Northfield Mount Hermon School
 MM-Trail (NENST) Parcel - 125 acres
 Northfield, MA





MassTrails Grant Program

Eligible Grant Projects – by activity

Development and rehabilitation of trailside and trailhead facilities



mass.gov/doc/masstrails-bike-wayfinding-design-guide/download



MassTrails Grant Program

Eligible Grant Projects – by activity

Design and creation of paper and digital trail maps or brochures

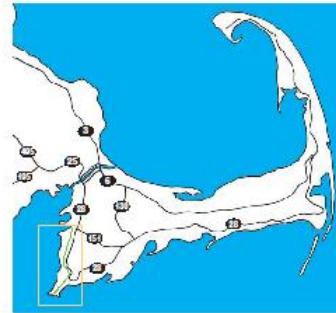


Safety and Etiquette

- Speed limit for all users is 15 mph (24 km/h).
 - Motorized vehicles are prohibited, with the exception of motorized wheelchairs.
 - Always keep to the right, except to pass.
 - Pass on the left, only when safe, and call out or sound a warning signal before passing someone.
 - Do not block the path. When stopping, move off the path so other users can pass safely.
 - Do not litter.
 - Keep dogs leashed and controlled.
 - Please respect private property along the Bikeway.
- Massachusetts State Laws include:
- Obey all traffic control signs;
 - Helmets are required for bicyclists and skaters aged 16 and under;
 - A headlamp is required when using the path at night.

The full list of Rules and Regulations is posted in the informational kiosks on the Bikeway.

For Emergencies:
Medical, Police, and Fire: Call 911
 To report non-emergencies, contact Falmouth Police:
 (508) 457-2527



Directions

From Bourne Bridge to Bikeway Northern Terminus at County Road. Exit Rte. 26 at Rte. 151. Go west, through traffic light at Rte. 26A. Cross railroad tracks, and turn right into parking lot. To Depot Ave. Bikeway Parking in Falmouth Village. Continue south on Rte. 26 into Falmouth Village. Turn right onto Depot Ave., and parking lot is on left across from bus station.

Trail Management

The Shining Sea Bikeway is maintained by the Town of Falmouth Department of Public Works and the Falmouth Bikeways Committee (bikeways@falmouthmass.us). To volunteer as a bikeway steward, contact the Friends of Falmouth Bikeways (friendsoffalmouthbikeways.com).

Brochure Credits and Sponsors

Content -
 Town of Falmouth Bikeways Committee • Stace Beaulieu, Project Manager • Kaitly Sharp Frisese, Writer • Joanne Britana-Gartner, Designer • Bob Shea, Falmouth GIS Coordinator

Consultants -
 Beth Schwarzman, Geologist • Ivan Valleja, Ecologist

Funded by -



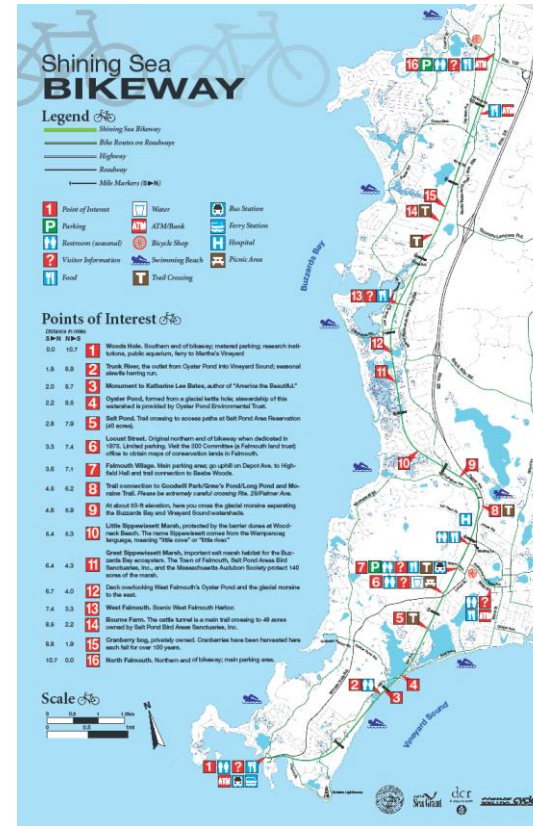
Shining Sea BIKEWAY

from sea to shining sea



Exploring the Natural History and Cultural Heritage of Falmouth, Massachusetts

cape cod





MassTrails Grant Program

Eligible Grant Projects – by activity

Rental or purchase of trail construction and maintenance equipment





MassTrails Grant Program

Eligible Grant Projects – by activity

Trail Assessments





MassTrails Grant Program

Regulatory Requirements



- Landowner Permission (including CR approval)
- Public Access
- Build America, Buy America
- Environmental Permitting
- Historic/Archaeological Resources

MassTrails Grants Program



2025 Application Period is OPEN

Deadline: Monday, February 3, 2025 by 11:59pm

LEARN MORE: mass.gov/guides/masstrails-grants

APPLY: mass.gov/how-to/apply-for-a-masstrails-grant

MASSTRAILS (general info): mass.gov/welcome-to-masstrails

DCR STATE PARKS AND FOREST TRAILS (general info): mass.gov/trails-in-dcr-state-parks-and-forests

CONTACT

Eli Velluti-Fry MassTrails Grant Program Manager
elijah.velluti-fry@mass.gov